

### PD Flowmeters

PD Flowmeter HPDM1000 and HPDM3000

Positive Displacement Flow meters 8" or 10"  
Flow Rate up to 15,000 l/min.  
Accuracy  $\pm 0,1\%$

#### TURNKEY SOLUTIONS

There are many variables to take into account when fitting a blending system and our highly skilled engineers will adapt our system to fit your exact requirements.

#### TECHNICAL SUPPORT

We are with you all the way. Before, during and after the implementation to secure a flawless integration and operation.

#### ZERO DOWNTIME

As a central part of a bunker delivery system; mechanical stability, toughness and durability is an important aspect of the manufacturing and design philosophy.

For more information on these or other of our products or services please visit us on the Web at:

[www.cbi.dk](http://www.cbi.dk)



#### USES

- Loading of tanks, tank wagons, and barges
- Transfer of petrochemical products in refineries, depots and pipelines
- Calibration of other meters and vessels (Master meters).

## High Volume Flow Meters

The HPDM series PD Flow meters are positive displacement types with double case that are available in 8" or 10" sizes.

The meters have proven their exceptional accuracy over a very wide range, and this accuracy is maintained over a long period of use.

The durability is obtained using a simple but ingenious design. The only moving parts are the rotor and rotor vanes which are constantly immersed in liquid.

The double case HPDM flow meters are suitable for a wide range of pressures up to 10,000 KPa (100 bar) while maintaining a high measuring precision.

Moreover the design permits disassembly of the measuring chamber without removing the external case from the production line.

The electronic counter permits reading and

setting of the parameters necessary to perform the following functions:-

- totalization
- presetting
- temperature compensation at 15°C
- linearization of the meter's error curve
- transmission of data

The readings can be in m<sup>3</sup> or gallons. There are two models to choose from depending on the application; the HPDM 1000 and the HPDM 3000.

The HPDM 1000 has only one measuring chamber while the HPDM 3000 has two. For further details please read the technical specifications.

### PD Flowmeters

PD Flowmeter - HPDM1000 and HPDM3000

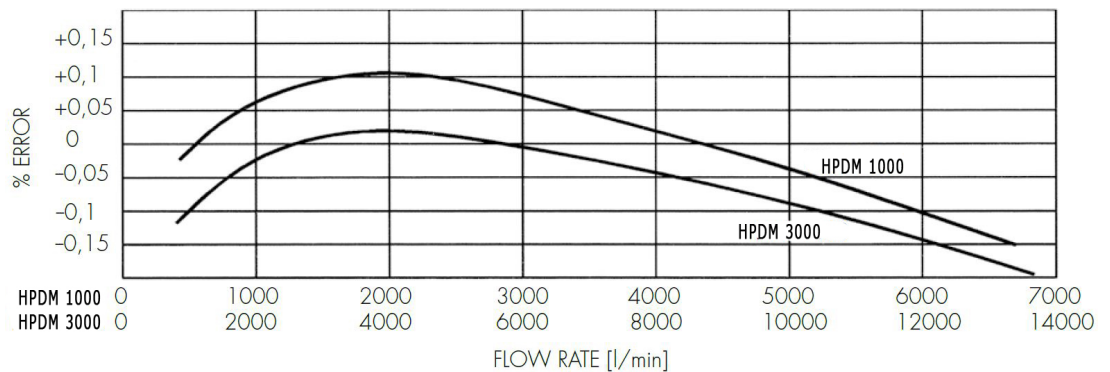
## Technical Specifications PD Flowmeters - HPDM 1000 and 3000

	Bunker Fuel 400 cSt - ACTUAL		Gasoil and cutter 10 cSt - ACTUAL	
	Max. Permanent flow rate	Max. Temporary flow rate	Max. Permanent flow rate	Max. Temporary flow rate
<b>HPDM1000 8" (DN200 PN16)</b>	3,100 l/min 186 m <sup>3</sup> /h	3,500 l/min 210 m <sup>3</sup> /h	7,000 l/min 420 m <sup>3</sup> /h	7,800 l/min 468 m <sup>3</sup> /h
<b>HPDM3000 10" (DN250 PN16)</b>	6,200 l/min 372 m <sup>3</sup> /h	7,000 l/min 420 m <sup>3</sup> /h	14,000 l/min 840 m <sup>3</sup> /h	15,700 l/min 942 m <sup>3</sup> /h
<b>Counter Reading</b>	M <sup>3</sup>			
<b>Max. Working Pressure</b>	ANSI 150 RF: 16 bar (1050 kPa) Test Pressure: 25 bar			
<b>Working Temperature</b>	Min. 263 K (-10°C) Max. 373 K (+100°C)			
<b>Coupling</b>	Magnetic Drive up to +100°C			
<b>Calibration Mechanism</b>	Included			
<b>Veder Root 7887 Totalizer Counter</b>	Included (5 Digit resetable, 8 digit non-resetable)			

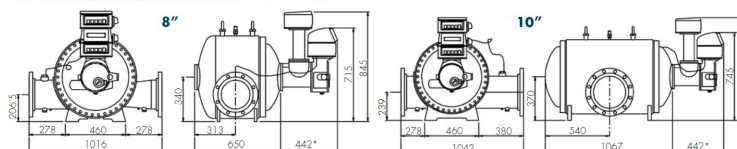
### SERVICES AVAILABLE

Consulting Services  
Technical Support  
Installation and Setup  
Maintenance  
Warranty

### Typical accuracy curves



P.D. meter with mechanical counter



### Strainers and air separators

For accurate metering the liquid has to be correctly filtered and deaerated.  
Suggested filtration:

- 100 mesh for gasoline, kerosene and water
- 60 mesh for diesel oil
- 40 mesh for viscous products.

# Go4

INTELLIGENT BUNKERING SOLUTIONS

Go4 Bunker ApS

Lille Blodevej 3

DK-3600 Frederikssund

Denmark

+45 4731 3388

www.cbi.dk